

ssLASER

LASER BEAM POSITIONING AND MODULATION SYSTEM

Cutting, Drilling, Engraving, 3d Modeling

STANDARD HARDWARE FEATURES

- Pulse width Laser Modulation at up to 50khz rep rate with Tickle
- Flash saved motion parameters for a wide range of systems
- Move Lasers on gantries at 20 ips or flying mirrors at 100 ips
- 5a 44v Step Motor Drivers with Electronic Fusing for each axis
- Universal Power input 90-265vac, Convection and Fan Cooling
- Inputs on each axis for Limit and optional Encoder inputs
- RS-232 Control or Program Download 115.2kBaoud
- 32 Megabyte Memory for Data and 0.5 Meg Flash for Application
- No jumpers, switches, or pots. Everything is programmable.
- Safety interlock plus indicators for motors, power, laser, comm.

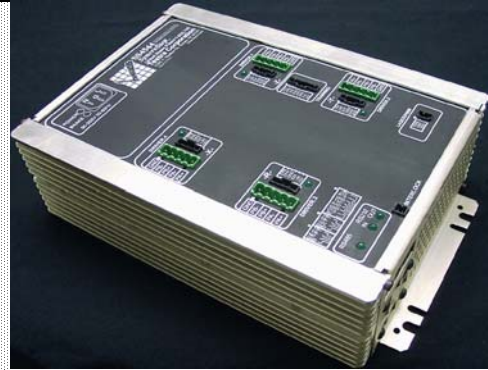
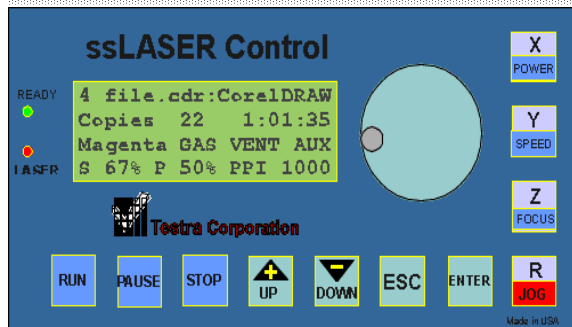


Photo of SS-4544 4-axes SyncroStep* Control System



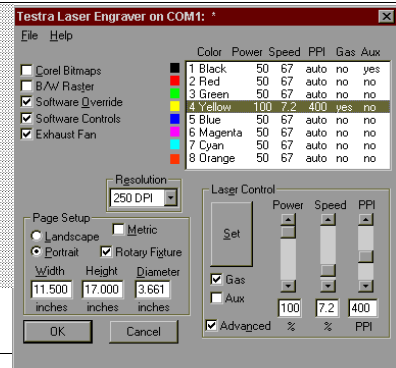
ssLASER CONTROL PANEL FEATURES

- ◆ 4x20 Character LCD Display with backlight
- ◆ Encoder Pot adjuster for, Jog, Power, Speed, etc.
- ◆ Dedicated function keys, indicators and Menu System
- ◆ Can store multiple programs locally and run stand alone.
- ◆ Interprets HPGL with graphic extensions for rastering
- ◆ Jogging for all axes, with arbitrary work zero setting
- ◆ Speed and Power adjustments during operation
- ◆ Stop for inspection, manual work zero setting, and more!

WINDOWS PRINT DRIVER *

- ◆ Allows for printing of raster and vector files from most windows applications
- ◆ Drawing colors may be used to select different Laser cutting parameters
- ◆ Rastering at various DPI levels to 1000
- ◆ Rubber Stamp mode with automatic edge tapering
- ◆ 256 level grayscale for 3-d engraving and photos
- ◆ Rotary mode to wrap a graphic around a cylindrical object

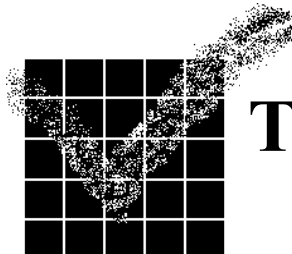
* NOTE: You are also supplied with ssDEMO software which allows for motion setup and tuning. Other Software is available for different control applications such as a G-code interpreter, or a DLL for those whose inclination is to write their own application.



OEM Custom Solutions

We will work with original equipment manufacturers to either integrate our standard controllers into their product or do custom solutions. When volume justifies it we will license our design and assist in your system development. We can also do turnkey designs and manufacturing of your product in its entirety including ASIC development to put it all on a chip. Custom software solutions are also available.

SyncroStepping * All of our motion systems utilize a method that synchronously, microstep, sample and correct the current on multiple axes of control at a 50 khz rate, resulting in servo like smoothness of control to a stepper motor system.



Complete \$1995 @ Qty 1

Testra Corporation

1201 N. Stadem Drive Tempe AZ 85281

Ph: 480-966-8428 Fax: 480-895-3589

Email: sales@testra.com

* US Patent 5,650,705